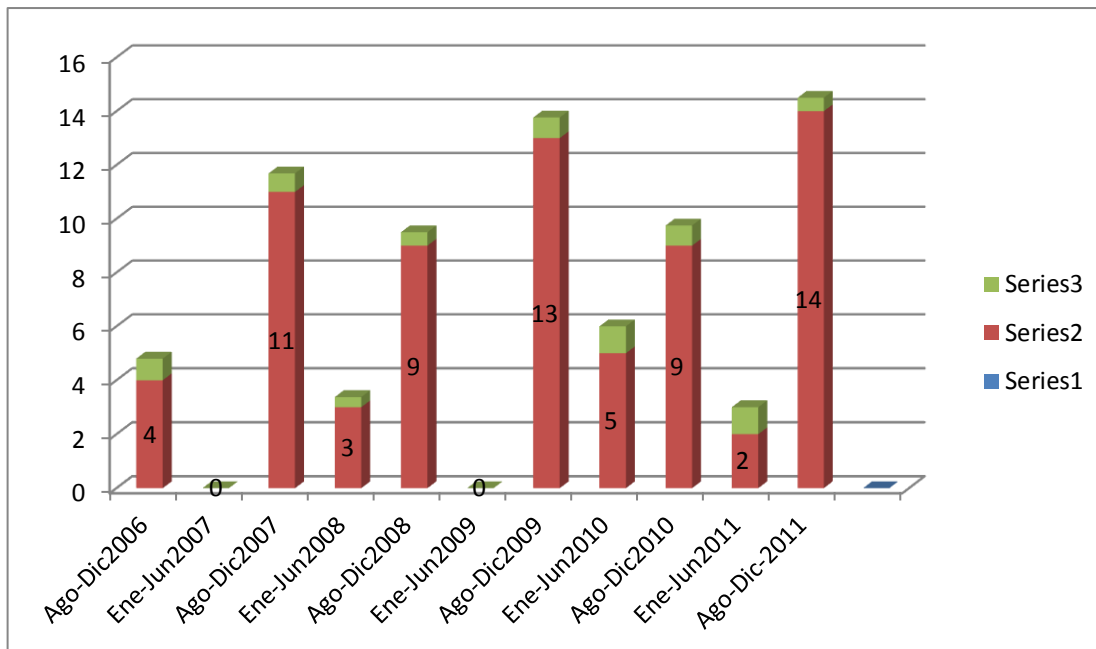


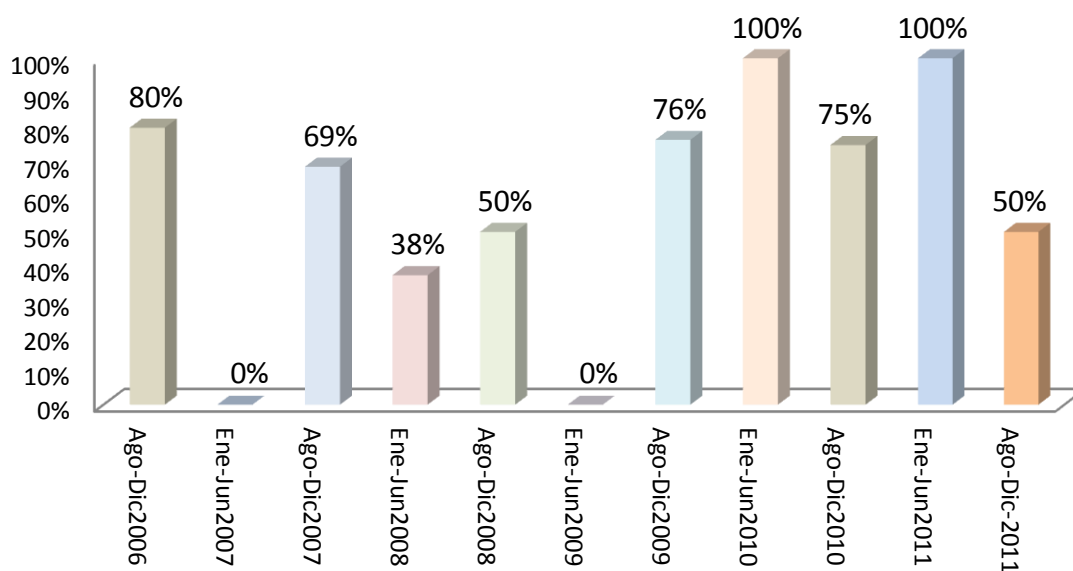
INGENIERO AGRÓNOMO FORESTAL

Eficiencia Terminal

Semestre	Ingreso	Terminaron	EF. Terminal
Ago-Dic2006	5	4	80%
Ene-Jun2007	0	0	0%
Ago-Dic2007	16	11	69%
Ene-Jun2008	8	3	38%
Ago-Dic2008	18	9	50%
Ene-Jun2009	0	0	0%
Ago-Dic2009	17	13	76%
Ene-Jun2010	5	5	100%
Ago-Dic2010	12	9	75%
Ene-Jun2011	2	2	100%
Ago-Dic-2011	28	14	50%
Ene-Jun2012	6		
Ago-Dic-2012	23		
Ene-Jun2013	0		
Ago-Dic-2013	17		
Ene-Jun2014	0		
Ago-Dic-2014	15		
Ene-Jun2015	5		
Ago-Dic-2015	11		



EF. Terminal IF (%)



Ingreso y Egreso IF (Cant)

